

School hygiene rooms

THROUGH OUR SPONSORSHIP of the Changing Places campaign* we have developed a range of equipment and servicing packages, that are not only suitable for Changing Place facilities, but also for school Hygiene Rooms.

Hygiene rooms ideally have an area of 13 square metres and are square shaped. Some facilities only need a couple of specialist items such as an height-adjustable changing table and hoist system. Others, however, may require the above two items together with a height-adjustable wash-hand basin, Clos-o-Mat automatic wash/ dry toilet, support rails, privacy screens etc., and it is this specialist equipment we are particularly familiar with.

Our full support includes:

- Advice on the room layout and equipment.
- Provision of equipment on a supply or supply and install basis
- A range of service and after-sales care packages contributes to the long-term life of the equipment
- Staff training in the safe use of the equipment helps to ensure you gain the maximum benefit from your investment
- In cases where only a short-term need is expected, we can provide rental options



In addition to the hygiene rooms we have recently worked upon, we have also provided Changing Place facilities for a number of well known organisations including IKEA, MOTO motorway services, Network Rail, NCP car parks. We have used some of these to produce case studies, which can be downloaded from our web site:

www.clos-o-mat.com.

The equipment we usually supply includes:

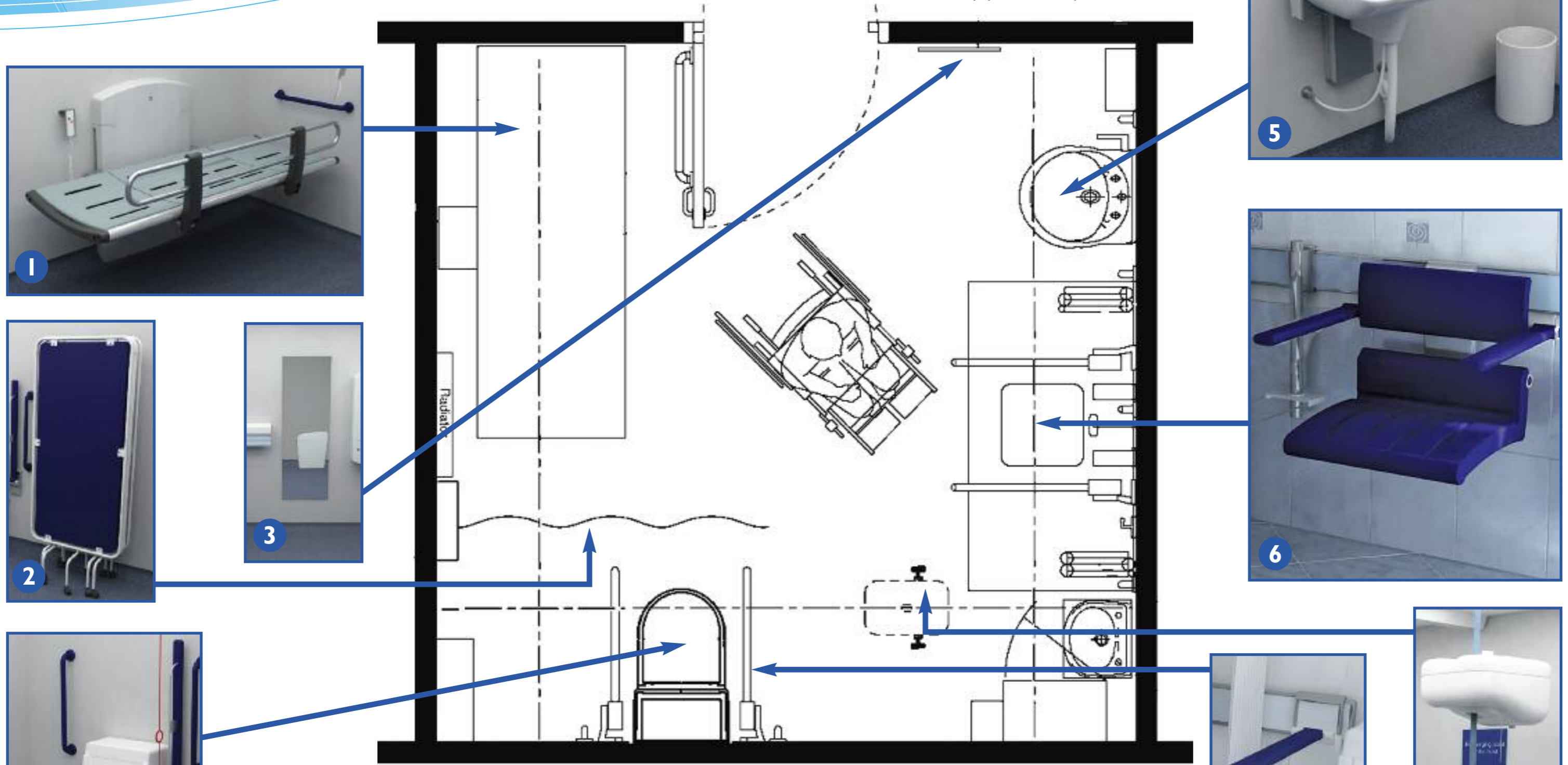
- Changing benches – height-adjustable – either wall mounted or mobile
- Wash-hand basins – height adjustable – gas or electrically powered
- Overhead ceiling track hoists – either full room coverage or single track systems
- Clos-o-Mat automatic wash/dry toilets, including a range of options.

Many children have these in their own home and their inclusion in the hygiene room or in another toilet facility allows their home care to be replicated at school.

A variety of smaller items including drop down support rails, grab rails, wide paper roll dispensers, mirrors etc.

Our products...

Typical layout



- 1. Height-adjustable changing bench, electric, 1300/1800mm long
- 2. Privacy screen
- 3. Mirror 600mm x 1000mm
- 4. Clos-o-Mat Palma Vita Shower Toilet

- 5. Height-adjustable wash-hand basin, electric
- 6. Height-adjustable shower seat
- 7. Height-adjustable, fold-away support rail
- 8. Overhead full room coverage hoist

Total Hygiene — total solution

The movement towards inclusion and integration has seen numbers of pupils with special and complex needs in mainstream schools increase to almost 20%, prompting the need to provide specialist toilet/hygiene facilities for them.

The Department of Education's Building Bulletins 77 and 102 provide design guidance, the former outlining requirements for Hygiene Rooms – a convenient solution to meeting the needs of pupils in wheelchairs. Such areas should have space for at least the student and one or two adult support workers, a hoist, mobile height adjustable trolley for showering and/or changing, and a washbasin.

KING JAMES COLLEGE in Bishop Auckland is one school which has taken advantage of using one expert source of supply. The latter's SENCO (Special education needs co-ordinator) observes, "Because of the physical difficulties some of our students have, we needed to undertake some adaptations to conventional toilet facilities. We have created a new room, with a height-adjustable Clos-o-Mat, height-adjustable basin and height-adjustable changing table, all supplied by Total Hygiene. The students love it! We worked closely with a whole range of professionals to get the best advice, and provide the most flexible facilities that would meet the needs, and increase independence, of not only our current students, but those of the future."



We are uniquely positioned to help schools comply, providing a 'one stop shop' for advice, design, supply, installation and maintenance of all the equipment recommended for a Hygiene Room.

Our range of equipment can meet not only the core requirements of the Building Bulletins, but go beyond, to deliver greater independence for the child (and potentially overcome any potential issues re: intimate care) via its Palma Vita and Lima Lifter 'wash and dry' toilets.

*The Changing Places consortium comprises Mencap, PAMIS, Centre for Accessible Environments, Nottingham City Council, Dumfries & Galloway Council, and the Scottish Government. Total Hygiene sponsors the Changing Places campaign. The company has 50 years' experience in delivering toileting solutions for less able people.



clos mat™

Total Hygiene Limited • Bank House • 182-186 Washway Road • Sale • Cheshire • M33 6RN • Fax: 0161 973 2711

Tel: 0800 374 076 Email: info@clos-o-mat.com www.clos-o-mat.com